



THE UNIVERSITY
of EDINBURGH

2025

Postgraduate Guide

EDINBURGH
xtraordinary futures await

TOP 50

We're consistently ranked one of the top 50 universities in the world. We're 27th in the 2025 QS World University Rankings.

4TH

We're ranked fourth in the UK for research power, based on the 2021 Research Excellence Framework.¹

19TH

We're ranked 19th in the world's most international universities.²

24TH

Our graduates are ranked 24th in the world by employers.³

6TH

Edinburgh is ranked the sixth best student city in Europe and 13th in the world.⁴

20

There are 20 Nobel Prize winners who are alumni of the University or who have been members of academic staff here.

ONLINE LEADER

Edinburgh has one of the largest online postgraduate portfolios in the UK.

3RD

We're ranked third in the UK and sixth in Europe in the QS Sustainability Ranking 2024. We will be Net Zero by 2040.

¹ Times Higher Education, Overall Ranking of Institutions (REF 2021)
² Times Higher Education, Most International Universities in the World 2024
³ QS World University Rankings 2025
⁴ QS Best Student Cities 2025

Where visionaries, dreamers and pioneers converge to shape **extraordinary** futures.

27TH
in the world
QS World University Rankings 2025





We take on tomorrow's
greatest challenges

At the University of Edinburgh, extraordinary is just something our community has always done.

Working together, for more than 400 years, we've influenced the world in extraordinary ways – expanding the depth of human knowledge and improving the lives of people worldwide. Research conducted here led to the discovery of chloroform anaesthesia, the Higgs boson particle and in vitro fertilisation. Our academics, students and alumni have discovered carbon dioxide, led the Scottish Enlightenment to lay the foundations of contemporary thought, developed a genetically engineered vaccine against Hepatitis B, and identified the SARS Coronavirus.

As a leading global university, we're confident education will play a vital role solving the problems of tomorrow too.

We have long enjoyed a spirit of innovation and collaboration, bringing people with new outlooks and perspectives together in an international community. If you agree the future is a place of extraordinary possibilities, bring your limitless potential and join us. Anything could happen – extraordinary futures await.

Global connections

Our ambitious global strategies put world-class teaching and research experiences within reach. We collaborate with global partners, directly and through prestigious networks such as Universitas 21, COIMBRA, UNICA, LERU, and Una Europa. Our regional centres in Southeast Asia, South Asia, North America and East Asia engage with students, academics and alumni worldwide. Our interdisciplinary Edinburgh Earth Initiative and Edinburgh Futures Institute are tackling the issues that challenge us all – the climate crisis, poverty, the spread of epidemics and cross-border injustices. Find out more: global.ed.ac.uk



Start your
postgraduate journey

www.ed.ac.uk/studying/postgraduate

Join our community of minds



Total students:

49,485



Taught postgraduates:

On campus

13,025

Online learning

4,790



Research postgraduates:

6,530

Student numbers from academic year 2023/24

We are a wonderfully diverse mix of people of all kinds and minds. Our global community includes more than 49,000 students and researchers across more than 150 academic disciplines including:

- art, architecture and design
- biological and biomedical sciences
- business
- chemistry
- clinical sciences
- dance, music and theatre
- divinity and religious studies
- economics
- education and sport
- engineering
- geosciences
- health in social science
- history, classics and archaeology
- informatics
- interdisciplinary studies
- law
- literature, languages and cultures
- mathematics
- medicine
- molecular, genetic and population health sciences
- philosophy, psychology and language sciences
- physics and astronomy
- social and political science
- veterinary studies



Apply online using our Degree Finder

www.ed.ac.uk/postgraduate/degrees

Study in Edinburgh

On campus, you can choose full- or part-time, taught degrees, professional qualifications or independent research. All our postgraduates benefit from our inspiring research culture and the academics involved in your teaching and learning include leaders in their fields. The emphasis at postgraduate level is very much on independent study, supported and enhanced by the wealth of resources and opportunities we offer.

Further information and a full list of all our programmes is available online: www.ed.ac.uk/postgraduate/degrees

Study online

We deliver flexible online learning to thousands of postgraduates worldwide – letting you study with us from home, or on the go, alongside your work and other commitments. We offer more than 80 innovative online degrees, across a range of subjects, which are academically equivalent to qualifications earned on campus. Our flexible learning environment and interactive learning technology adapt to your needs. We take the quality of your experience, the delivery of online teaching, and the support you receive, as seriously as we do on

campus. Online students value our diverse international learning community. Many work while studying, taking what they learn from their tutors and global classmates and applying it immediately to their own role.

Most students take an online masters part-time, but we also offer full-time and intermittent options, short courses and fusion degrees as well as free study through Coursera, FutureLearn and edX. Find out more: www.ed.ac.uk/online-learning

Fusion learning

In addition, the University offers opportunities to help students develop creative, critical, and data-informed thinking in programmes that cut across traditional disciplinary boundaries. The Edinburgh Futures Institute's fusion teaching approach connects global cohorts in new ways. Students can choose to study in teaching spaces and digital learning environments designed to enable shared on-campus and online teaching and learning activity. Please note, some exemptions apply. Further information online: efi.ed.ac.uk





Whatever excites you,
whatever your ambition
– we are here for you



Your postgraduate experience will be supported and enhanced by the wealth of resources and opportunities on offer.

Industry links and innovation

We were one of the first UK universities to develop commercial links with industry, government, and the professions. Edinburgh is an entrepreneurial city, home to two of the UK's \$1 billion-valued unicorn companies.

We boast one of the most entrepreneurial student bodies in the UK. In 2022/23 our student startups secured more than £32 million in investment, grants and funding. Our commercialisation service, Edinburgh Innovations (EI), has helped students launch 115 student startups during that time.

One in five was a social enterprise, and just under half were founded by women. EI offers free support to student entrepreneurs including one-to-one business advice, a range of workshops, events and competitions as well as a dedicated student enterprise hub and funding opportunities, including our in-house venture capital

fund Old College Capital. You don't need a business background or even an idea to access the service – EI encourages that first innovative spark and your startup ambitions: uoe-edinburgh-innovations.ed.ac.uk/for-students

Edinburgh Futures Institute

The challenges of the modern world demand new ways of working that can disrupt the status quo and question established ways of thinking. Our Edinburgh Futures Institute is focused on tackling today's increasingly complex issues and shaping the world through education and research with a difference. It brings people and disciplines together to spark the unexpected and create a curious, open-minded thought laboratory in order to make better futures possible. The cross-sector, interdisciplinary approach showcases the very best the University has to offer and includes learning and collaboration across many fields and areas of expertise. Find out more: efi.ed.ac.uk

Institute for Academic Development

All postgraduate students can benefit from our Institute for Academic Development (IAD), which provides information, events and workshops to develop the skills you will need throughout your studies and in the future. IAD events also offer the perfect opportunity to meet and network with other postgraduates from across the University. Further information is available online: institute-academic-development.ed.ac.uk/postgraduate

For taught postgraduates, IAD provides a popular study-related and transferable skills support programme designed to help you settle into postgraduate life, succeed during your studies and move confidently to the next stage of your career.

For postgraduate researchers, IAD provides a comprehensive programme of transferable-skills training, resources and support, designed to help you successfully prepare for the various milestones of your PhD, from getting started with your research, to writing up and preparing for the viva, and developing personal and professional skills that can be transferred to your

future employment. IAD also offers online resources and planning tools to help get your research started, as well as support for tutoring and demonstrating, and public engagement and communication.

Careers Service

Our graduates are ranked 24th in the world by employers (QS World University Rankings 2025), making Edinburgh an excellent choice for a postgraduate education with prospects.

Our Careers Service provides comprehensive, high-quality online resources and workshops for postgraduates and tailored sessions for international students. We develop our already strong links with employers from all industry sectors, from the world's top recruiters to small local enterprises, and organise opportunities for you to meet employers: careers.ed.ac.uk/students/postgraduates

Personal and academic support

You will be supported by academic and professional student experience and administrative staff, who will provide academic and wellbeing guidance and support.

We aim to provide an environment that enables and supports you to flourish; to promote good mental and physical health among our students; and ensure you are well supported during your studies:

www.ed.ac.uk/students/health-wellbeing

All students should register with a doctor:

www.health-service.ed.ac.uk

International students can find further information on UK medical care: edin.ac/ukcisa-healthcare

Our Counselling Service offers you a professional, confidential service and the Advice Place, run by Edinburgh University Students' Association, offers free, confidential and independent advice:

student-counselling.ed.ac.uk

www.eusa.ed.ac.uk/adviceplace

Disability and Learning Support Service

We provide support for students who have a health condition, disability or neurodiverse condition, such as dyslexia or autism, which affects their studies. Please get in touch as soon as possible to discuss the range of tailored support available with one of our advisers:

disability-learning-support-service.ed.ac.uk

Language support

Our English Language Education service offers free academic English tuition, self-study materials and advice: ele.ed.ac.uk

For international students, Edinburgh University Students' Association provides support by tapping into the language skills and cultural knowledge of our global community. They offer peer proofreading, free taster language courses and language networking events:

www.eusa.ed.ac.uk/activities/global

Library support

Our award-winning staff are here to help you make the most out of the University's libraries. Academic Support Librarians help you develop the digital and information literacy skills to use library resources to get the best from your studies and research. They can point you towards a range of guides on your subject area, reference management, literature searching, and also offer library tours and one-to-one consultations:

www.ed.ac.uk/library/academic-support-librarians

Employ.ed for PhDs

Employ.ed offers part-time internships enabling PhD students to gain project-based, paid employment. This will help you develop a range of skills to complement your academic and research experience:

edin.ac/employed-for-phds

Whatever your ambition, we are
here for you



Watch current
PhD student stories

edin.ac/phd-stories

How to apply

Bring your individuality, your power, your energy and your potential. We can't wait to see all that you can do. Here's how to apply.

Apply online using our Degree Finder:
www.ed.ac.uk/postgraduate/degrees

Gather your supporting documentation, write your personal statement, and select referees.

The supporting documentation required varies. Typically, you will need to provide:

- academic transcripts
- your degree certificate
- a personal statement
- academic reference(s)
- a research proposal (if appropriate).

You will need certified translations of your official documents if they were not originally issued in English. Some programmes require specific evidence of your suitability for study, such as a portfolio, relevant experience, or attendance at interview.

Apply online using our Degree Finder. You will create an Applicant Hub account to write and submit your application and upload supporting documentation:
edin.ac/submitting-online-application

International students may also apply using a representative, who will guide you through your application. We have approved agents in 40 countries:
www.ed.ac.uk/studying/international/agents

Application fees/deposits

A small number of programmes charge an application fee and/or require a deposit. Where applicable this will be stated in the Degree Finder.

Deadlines

Check the Degree Finder or PhD project website for application deadlines.

We strongly recommend that you apply as early as possible, particularly if you need to allow time to apply for a visa or for financial support – some sources of funding require you to have an offer of a place before you can apply.

Applying for a student visa

If you are a national of a country outside the UK, it is likely that you will have to apply for a student visa to study on campus: www.ed.ac.uk/immigration

Regularly track your application online through the Applicant Hub, which we will use to contact you if we require any further information and to inform you of the outcome.

Find out more

For further information on applying:
www.ed.ac.uk/postgraduate/applying

Taught programmes

Use our Degree Finder to choose your programme and check specific academic and English language entry requirements: www.ed.ac.uk/postgraduate/degrees

Academic entry requirements

We usually expect a minimum of a 2:1 honours degree, or international equivalent, but check the Degree Finder for specific requirements. Guidance on equivalents: www.ed.ac.uk/international/postgraduate-entry

English language requirements

Regardless of your nationality or country of residence, you must demonstrate a level of English language competency. You can apply before receiving English language test results – offers will be conditional on meeting language requirements. English language qualifications must be no more than three and a half years old from the start date of your programme, unless you are using IELTS, PTE, TOEFL, Trinity ISE or Oxford ELLT, which must be no more than two years old. We also accept a degree, taught and assessed in English:

- in a majority English-speaking country as defined by UK Visas & Immigration (UKVI); or
- by one of our approved universities in non-majority English-speaking countries.

If you are not a national of a majority English-speaking country, your degree must be no more than five years old from the start date of your programme.

www.ed.ac.uk/english-requirements/pg

Application deadlines and timescales

Many of our postgraduate degree programmes have specific application and decision deadlines. Some have rolling application dates while others have fixed dates. Please check the programme page in the Degree Finder to understand the deadlines, the application process and timescales for hearing back from the University.

PhD research

There are two main routes to apply for PhD study:

Apply to a funded project

When we receive funding for research on a specific topic, we advertise doctoral positions on our website and on other websites, such as FindAPhD.com. We recommend you contact the project supervisor to discuss your suitability and then apply through the Degree Finder. If applying to a funded project, you may not need to develop a full research proposal but will be asked to give an indication of your preparedness for this type of study. You should use your personal statement and relevant experience sections of your application to demonstrate the skills, knowledge and subject expertise, which make you the ideal candidate.

Propose your own research topic

To carry out independent research, you can apply for a PhD by submitting your research topic. We recommend you contact us to discuss your intended research before you apply. We can give feedback on your ideas and identify whether we have supervisory expertise in your area. If your intended research is multidisciplinary, it might be helpful to talk to more than one potential supervisor: www.ed.ac.uk/postgraduate/phd-supervisors

You will need to submit a research proposal with your application to help us assess your suitability for a research degree and whether we can offer appropriate supervision and facilities. It can potentially also be used to apply to external bodies for funding: www.ed.ac.uk/postgraduate/research-proposals

To apply for PhD study in a doctoral training centre, see the Degree Finder entry for more details.

If you already have a PhD, or are near completion, we advertise postdoctoral vacancies for current research projects: www.vacancies.ed.ac.uk

Further information on PhD study:
www.ed.ac.uk/postgraduate/research

Becoming an extraordinary student entrepreneur

During her PhD studies Kamila Malysz set up her own lab that harnesses exosomes to make drug therapies more efficient and accessible.

After attending the International School in Warsaw, Poland, Kamila gained her Bachelor of Science in Biotechnology in 2015 and a Master of Science by Research in Developmental Biology in 2016 at the University of Edinburgh.

She then spent three years in industry at Censo Biotechnologies, where she met fellow co-founder of Excellio, Kasia Maj, before successfully applying for a core scientist postdoctoral position at the University's Roslin Institute. Here she started her PhD, focusing on explaining the role of certain genes in human leukaemia.

Starting up

During her studies, Kamila went to entrepreneurship workshops hosted by the University's commercialisation service, Edinburgh Innovations (EI) and founded Excellio Labs focusing on exosomes.

"Exosomes are small vesicles – tiny sacs of fluid – that are secreted by every cell in our bodies," Kamila explains. "In our technology, we tweak them to equip them with a sort of biological GPS. They can deliver drugs precisely where they are needed in the body."

Kamila attended EI's Startup Summer Accelerator, a 12-week online leadership programme for students and

recent alumni, and Venture Builder Incubator, a series of workshops and events for postgraduate students and research staff, run by the University's Bayes Centre and EI. She also got advice on applying for grants and funding.

At the University's recent Inspire Launch Grow awards, which celebrate student and graduate entrepreneurs, Kamila was crowned Emerging Female Entrepreneur, receiving a £10K prize.

Building a business

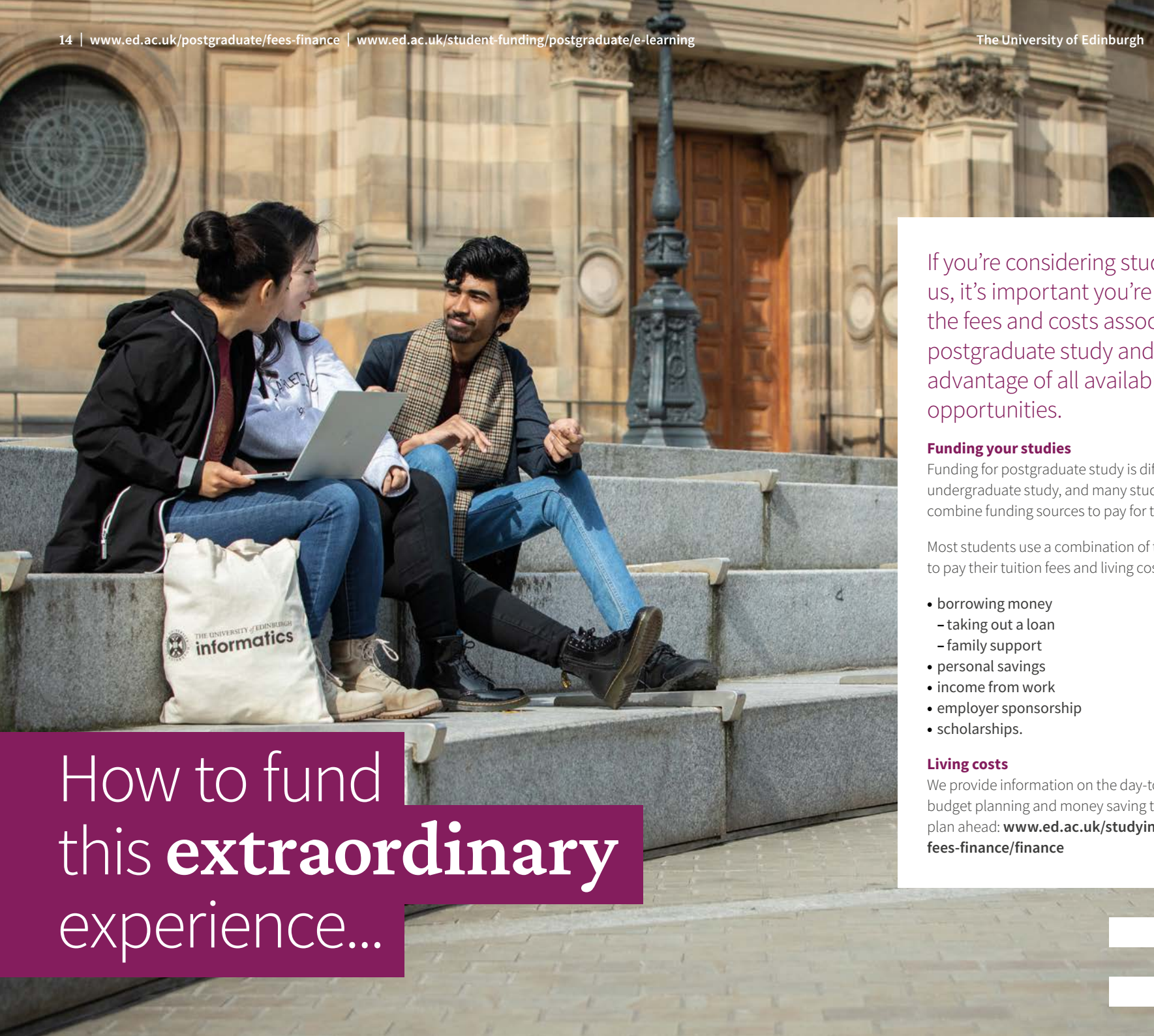
Excellio Labs is carrying out several feasibility studies and has submitted grant applications to work with companies in the UK and Switzerland on making exosomes to target cancer. At Edinburgh, the team has a collaborator with a promising, but currently too toxic, drug for colon cancer. Excellio's exosomes could make it safe to use.

Kamila and Kasia have clear plans for the startup company: "We want to have clinically ready tissue-specific exosomes from several major disease classes like cancer and neurodegenerative diseases, to have them ready to load with the therapeutics of other companies. We also hope to be on advanced clinical trials with our own therapeutics."

Kamila believes other postgraduate student entrepreneurs can achieve success through self-belief and support: "If you want something, just go for it. Go to EI workshops, connect with people who are in the place where you want to be and follow their advice. You never know where it's going to take you."



Read more about
Kamila's journey
[impact.ed.ac.uk/inspiring-minds/
in-the-genes](https://impact.ed.ac.uk/inspiring-minds/in-the-genes)



How to fund
this **extraordinary**
experience...

If you're considering studying with us, it's important you're aware of the fees and costs associated with postgraduate study and taking full advantage of all available funding opportunities.

Funding your studies

Funding for postgraduate study is different to undergraduate study, and many students need to combine funding sources to pay for their studies.

Most students use a combination of the following funding to pay their tuition fees and living costs:

- borrowing money
 - taking out a loan
 - family support
- personal savings
- income from work
- employer sponsorship
- scholarships.

Living costs

We provide information on the day-to-day cost of living, budget planning and money saving tips that can help you plan ahead: www.ed.ac.uk/studying/postgraduate/fees-finance/finance

Tuition fees

You will find up-to-date fee levels for your specific programme online:

registryservices.ed.ac.uk/tuition-fees/find

You will also find information on other studying and living costs online: www.ed.ac.uk/postgraduate/fees-finance

Fee status: We will assign you a fee status depending on whether you are from Scotland, elsewhere in the UK, or another country. You can find out more about this and check your fee status at:

registryservices.ed.ac.uk/tuition-fees

Postgraduate students from the Republic of Ireland who are living within the Republic of Ireland will pay the UK fee rate. EU nationals living within the UK who have pre- or settled status and who meet the three-year residency requirement will also pay the UK fee rate. All other EU nationals living in the EU will be charged the international fee rate. Please check the latest information online and ensure you know your fee status and the fee rate you will pay, before you apply.

International/EU student fees for multiple year postgraduate research programmes have been fixed, meaning you will not be affected by an annual tuition fee increase, and will be charged a fixed annual fee based on your start date. Postgraduate taught fee rates are now fixed for all students on a multiple years programme.



Find out more
about funding

www.ed.ac.uk/studying/postgraduate/fees-finance

Scholarships and other funding opportunities

We offer academically outstanding candidates an extensive range of postgraduate scholarships, studentships and funding opportunities – the list below is just a small sample.

Search for funding opportunities:

www.ed.ac.uk/student-funding/search

Additional funding opportunities may become available, normally during October or November in the year prior to entry. Check back periodically for the most up-to-date information available.

Our Scholarships and Student Funding Services can also provide you with guidance: studentfunding@ed.ac.uk

Chevening Scholarships

The UK Foreign, Commonwealth and Development Office funds a number of Chevening Scholarships for postgraduate study, for one-year taught masters degrees. Full details of these awards can be obtained from your local embassy or high commission: www.chevening.org

Commonwealth Scholarships

The Commonwealth Scholarship and Fellowship Plan provides opportunities for students in one Commonwealth country to pursue advanced academic study at masters or MPhil/PhD level in another Commonwealth country. Applications are made to the Commonwealth Scholarship Agency (usually the Ministry of Education) in the applicant's home country: cscuk.fcdo.gov.uk

University of Edinburgh Alumni Scholarships

We offer a 10 per cent scholarship towards postgraduate fees to all alumni who graduated from the University as an undergraduate, and to all students who spent at least one semester studying at the University on a visiting programme (exceptions apply):

www.ed.ac.uk/student-funding/alumni-scholarships

Mastercard Foundation Scholars Program

The Mastercard Foundation Scholars Program at Edinburgh enables talented students from sub-Saharan Africa to access postgraduate scholarships. The aim is for scholars to fulfil their potential to lead transformative change, particularly in their home countries:

global.ed.ac.uk/mastercard-foundation

Education Beyond Borders

This University initiative supports students who have been forcibly displaced due to conflict, violence, or persecution.

Find out about scholarships and funding at:

global.ed.ac.uk/education-beyond-borders

PhD Scholarships

There is a growing number of full scholarships available for doctoral studies, including the Edinburgh Doctoral College Scholarships. Full scholarships cover all fees and a stipend. Full details can be found on School websites or via our scholarships portal:

www.ed.ac.uk/student-funding/postgraduate

Research councils

The University hosts a number of Centres for Doctoral Training, Doctoral Training Partnerships, and four-year PhDs that are funded by UKRI Research Councils, charities, trusts or other bodies. A full list is available online: doctoral-college.ed.ac.uk/doctoral-training-centres/about

UK Government loans

The Student Awards Agency Scotland offers eligible students who meet their nationality and residency criteria tuition fee loans for taught and research programmes at diploma and masters level, which will be paid directly to the University. Eligible full-time students can also apply for a non-income assessed living cost loan: www.saas.gov.uk

Student Finance England offers eligible students who meet their nationality and residency criteria postgraduate loans for taught and research masters programmes and also for doctoral degree study:

www.gov.uk/funding-for-postgraduate-study

Student Finance Wales offers eligible students who meet their nationality and residency criteria postgraduate finance for taught and research masters programmes, and postgraduate loans for doctoral degree study:

www.studentfinancewales.co.uk

Student Finance Northern Ireland offers eligible students who meet their nationality and residency criteria a tuition fee loan for taught and research programmes, at certificate, diploma, and masters level, which is paid directly to the University: www.studentfinancenir.co.uk

We also recommend you review the comprehensive guidance provided at: www.findamasters.com/guides/postgraduate-funding

Find out more about loan arrangements from UK funding agencies at: edin.ac/pgt-uk-loans



Funding tips

We know that finding the finances to fund your studies can seem overwhelming. We've compiled some top tips online to help you make the most of your funding application:

www.ed.ac.uk/student-funding/postgraduate



Explore this extraordinary city



Scotland's inspiring capital will be the backdrop to your life. One of Europe's great cultural hubs and a stimulating place to study, Edinburgh is an irresistible blend of history, natural beauty and modern city life.

Regularly voted one of the most desirable places to live in the world, Edinburgh is large enough to offer something for everyone but small enough to feel like home. It is a modern, sophisticated and beautiful European city with a diverse multicultural community. Well known for its friendly people, its safe green environment and its compact size – Edinburgh is easy to get around and get away from it all – wherever you are in the city, you are never far from open countryside.

Edinburgh is home to two UNESCO World Heritage Sites and was the world's first UNESCO City of Literature.

In the summer months the pace of life accelerates as the world-famous annual festivals get under way. Its location is perfect for adventurers, with diverse and readily accessible opportunities, from snowboarding to surfing. Scotland's natural beauty, from the Pentland Hills to the south to the coastline along the Firth of Forth to the north, is also on Edinburgh's doorstep. A single day could see you hillwalking in the morning, lazing on the beach in the afternoon, and enjoying the treasures of the medieval lanes and Georgian streets by night.



From remarkable and historic to cutting edge, our campuses provide inspirational facilities.

These include one of the largest academic libraries in the world – in total, our 10 libraries hold millions of printed and online volumes and grant access to more than 330,000 electronic journals and databases.

We have some of Europe's foremost research facilities on campus and our Centre for Research Collections is one of the world's most important resources of its kind, encompassing rare books, musical heritage, Shakespeare first editions, oriental manuscripts, architectural drawings, paintings, sculpture and more.

Edinburgh University Students' Association provides support, advice and representation during your studies and helps enhance your student experience with more than 400 student societies. Several international and multicultural societies offer support settling in and help you meet new friends. Find out more: www.eusa.ed.ac.uk

Whether you're a recreational gym user or a performance athlete, Sport and Exercise at the University offers world-class sport and fitness opportunities.

We've long been one of the UK's leading sporting universities, consistently finishing in the top five of the British Universities and Colleges Sport (BUCS) rankings.

Extraordinary
inspiration



Outstanding sport & fitness facilities

71 sports clubs

30 bookable activity spaces
(pitches, halls, pool)

Embrace life on campus or in the city

Students from all over the world live on campus or in private accommodation across the city.

Live on campus

Our postgraduate accommodation is in either traditional halls of residence or blocks of self-contained flats, featuring four to six single study bedrooms, with a mix of en-suite rooms or shared bathroom facilities. All our accommodation is self-catered and located within easy reach of key University buildings and Edinburgh city centre. It includes:

- comprehensive community and welfare networks and 24-hour support provided by the Residence Life team (for more details see: www.accom.ed.ac.uk/during-your-stay/residence-life)
- mixed gender residences, with some single sex flats available
- laundry facilities
- secure cycle storage
- personal contents insurance
- network services in each bedroom for access to email and the internet.

We offer adapted accommodation for those with disabilities and have a small selection suitable for students who wish to live with their partner or family. Find out more: www.accom.ed.ac.uk

Rents typically include utilities, internet, personal contents insurance and some cleaning. Based on a typical 51-week lease during the 2024/25 academic year, single room rent was in the range of £7,150–£16,475, while shared room rent started from £4,395.

You are guaranteed an offer of University accommodation if:

- you are a new, single postgraduate research (typically PhD) student or taught postgraduate student from outside the UK;
- you apply for accommodation by 31 July 2025 and have accepted an unconditional firm offer to study at the University;
- you will be studying in Edinburgh for the whole academic year starting in September 2025.

Live in the city

If you are not guaranteed an offer of University accommodation, or if you choose not to take up an offer, you will probably need to use private sector accommodation.

Our Domus service can help connect you with private sector landlords. A wide range of flats and studios is available, with the peace of mind of renting through the University and benefits included such as contents insurance, internet, and telephone. For more information, please visit: www.domus.ed.ac.uk

The Edinburgh University Students' Association also offers a range of information on accommodation through the Advice Place. Find out more at: www.eusa.ed.ac.uk/adviceplace/accommodation

Shape your extraordinary future

Find out more

There's far more information online.
Visit: www.ed.ac.uk/postgraduate

Alternatively, skip straight to our online degree finder:
www.ed.ac.uk/postgraduate/degrees

Contact us

Our Enquiry Team can advise you about admission to specific degrees or help if you have general enquiries about applying to the University:

futurestudents@ed.ac.uk

International students

If you are an international student with specific questions about your application, please email our enquiry team or check online for additional information:
www.ed.ac.uk/studying/international

Our overseas representatives

The University has certified representatives in specific regions and countries worldwide. Contact details for your local representatives are available online:
www.ed.ac.uk/international/representatives

Open days and visits

We offer many opportunities for you to find out more about the University, including online Open Days and events you can access from the comfort of your own home, as well as campus visits: www.ed.ac.uk/studying/postgraduate/open-days-events-visits





Virtual Visit

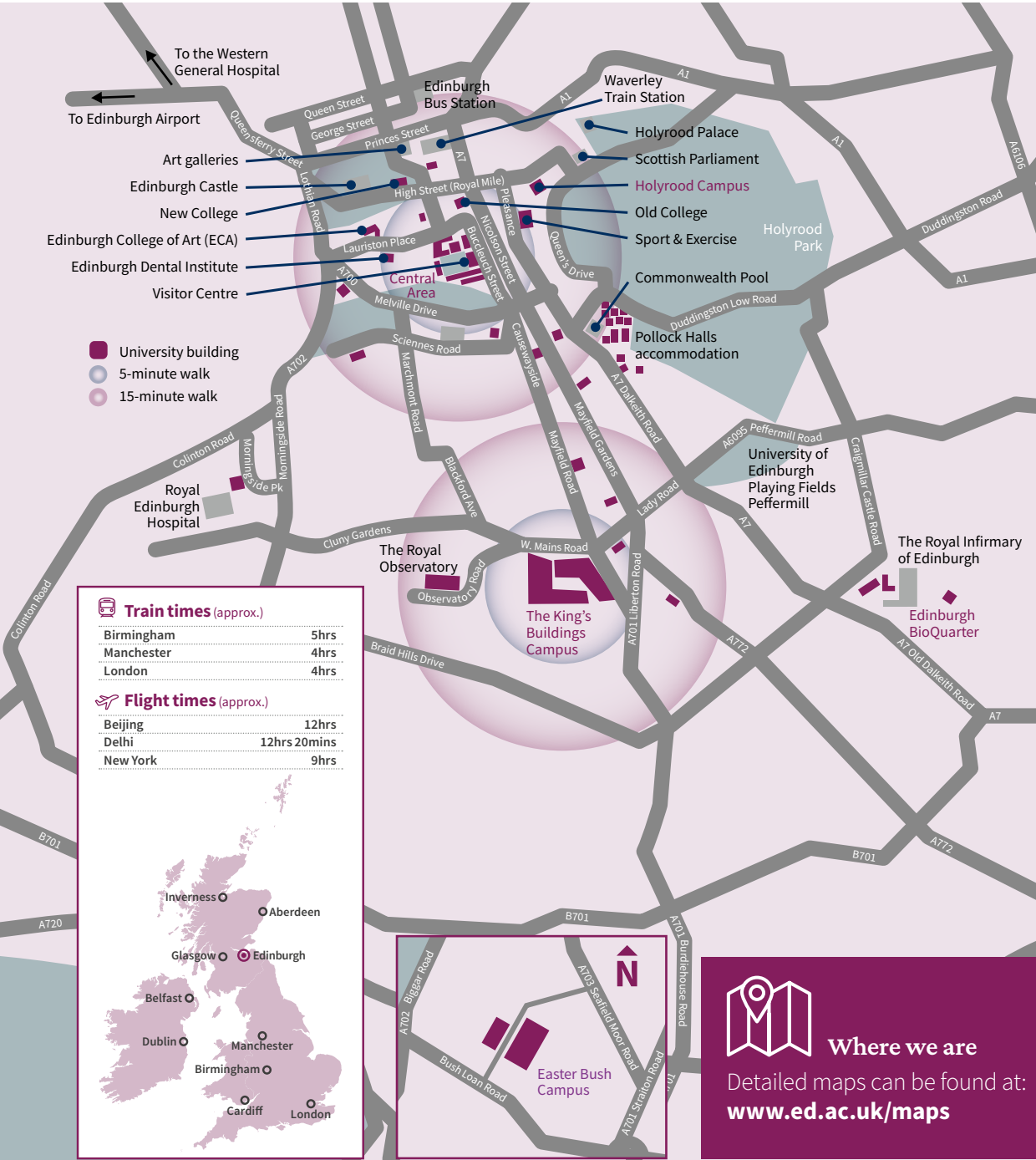
Can't visit Edinburgh in person? Our Virtual Visit allows you to virtually explore the University and the city. View a range of videos, 360° photos and image galleries, and hear from our students and staff to find out what it is like to live and study here: virtualvisits.ed.ac.uk/pg

Chat online

Wherever you are in the world, UniBuddy gives you the chance to chat to a current student about their experiences: edin.ac/student-chat

Get social

-  [linkedin.com/school/university-of-edinburgh](https://www.linkedin.com/school/university-of-edinburgh)
-  [instagram.com/edinburghuniversity](https://www.instagram.com/edinburghuniversity)
-  [facebook.com/UniversityOfEdinburgh](https://www.facebook.com/UniversityOfEdinburgh)
-  [youtube.com/EdinburghUniversity](https://www.youtube.com/EdinburghUniversity)



Where we are

Detailed maps can be found at:
www.ed.ac.uk/maps

Find out more

Take part in an online event or campus visit:

[www.ed.ac.uk/postgraduate/
open-days-events](http://www.ed.ac.uk/postgraduate/open-days-events)

virtualvisits.ed.ac.uk/pg

Find a degree:

www.ed.ac.uk/postgraduate/degrees

Artworked and published by:

Communications and Marketing, The University of Edinburgh

Designed by: The Gate Edinburgh

Printed by: J Thomson Colour Printers Limited

Photography by:

Callum Bennetts

Chris Close

Lottie Cripps

Paul Dodds

Yao Fu

Guthrie Aerial Photography

Keith Hunter

Sam Ingram-Sills

iStock.com

Lesley Martin

Andrew Perry

Paulius Staniunas @ All Is Amazing

Laurence Winram

© The University of Edinburgh 2024

No part of this publication may be reproduced without written permission from the University. We have made every effort to ensure the accuracy of the information in this guide before going to print. However, please check online for the most up-to-date information: www.ed.ac.uk/postgraduate

The University's standard terms and conditions will form an essential part of any contract between the University of Edinburgh and any student offered a place here. Our full terms and conditions are available online: www.ed.ac.uk/terms-conditions

This publication is available online at

www.ed.ac.uk/postgraduate and can be made available in alternative formats on request.

Please contact alternative.format@ed.ac.uk

Please recycle:

We are committed to reducing carbon emissions and becoming a net zero carbon university by 2040. This guide is suitable for recycling after use.

The University of Edinburgh is a charitable body registered in Scotland, with registration number SC005336.



www.ed.ac.uk