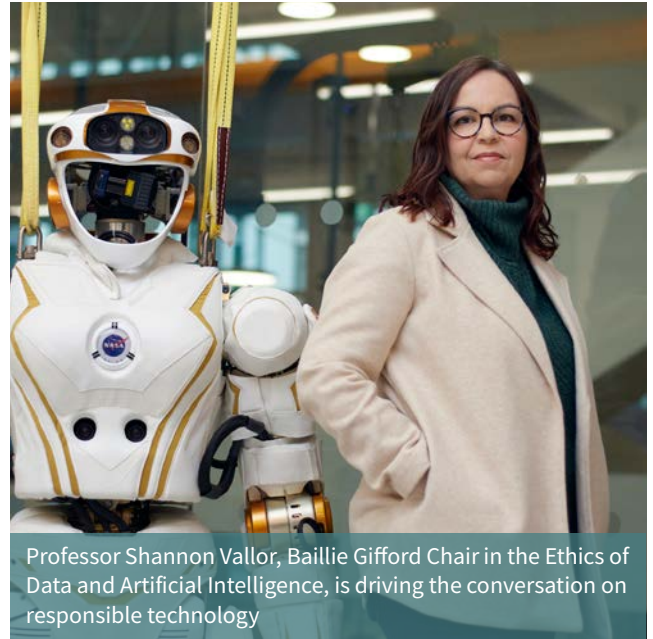




Research and Innovation Strategy 2030

Research at the University of Edinburgh has been transforming the world since 1583. Our Research and Innovation Strategy 2030 proudly builds on this legacy, creating an environment in which our research community can flourish and innovate – working alongside our partners in industry, the public sector, patients and local communities to produce extraordinary insights and discoveries that tackle the major problems facing our world. We will achieve this vision across three areas.



Professor Shannon Vallor, Baillie Gifford Chair in the Ethics of Data and Artificial Intelligence, is driving the conversation on responsible technology



1. Research

- We will strengthen capacity around the University's three core missions: shaping the future of health and care; tackling the climate and environmental crisis; and harnessing data, digital and AI for public good. The missions will galvanise activity across the whole University to tackle urgent global challenges.
- We will nurture cutting-edge discovery research, recognising that the transformative blue skies research of today will underpin the solutions of tomorrow. This includes a series of new seed funding schemes, and substantial investment in talent through our Chancellors Fellows and Edinburgh Career Development schemes.

- We will empower our research community to benefit from digital technologies, data and AI, and provide opportunities to continually update their methods skills.
- We will expand our community of environmental researchers and ensure sustainability is built into our research practices and projects, including through the Scotland Beyond Net Zero initiative.

2. Engagement

- We will build on outstanding growth in industry engagement and commercialisation, through establishing a clear and compelling Innovation Career Path.
- We will ramp up our strategic industry and investment partnerships.
- We will strengthen public and policy engagement at local, Scottish and UK levels, through investing in impact support, and through delivering data-driven innovation and growth through the next phase of the City Region Deal.
- We will deepen our international collaborations through consolidating platform partnerships with strategic partners, focused on our University missions.

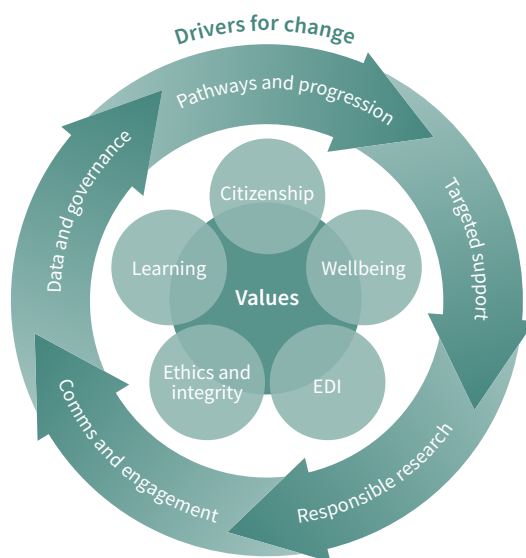


3. Environment

- We will ensure a collegial and inclusive environment for our whole research community. We will enhance career development and stability, addressing inequalities through targeted research support and a bespoke plan for postgraduate research culture.
- We will deliver an ambitious Technicians Commitment and a programme to improve career opportunities for research-enabling staff.
- We will foster responsible research through our sustainability commitment, our new University research ethics policy, and our Principles of Global Engagement.

We will deliver these ambitions through a robust approach that ensures we monitor, learn and adjust our approach – to maximise the benefits for our staff, and to unlock the transformative potential of our research.

How we are fostering an environment where researchers and those who support them can thrive



www.ed.ac.uk/research-innovation

