



Barvick Burn Woodland Creation Proposals

The University of Edinburgh has produced draft proposals for a woodland creation scheme at Barvick Burn, by Glenturret, near Crieff.

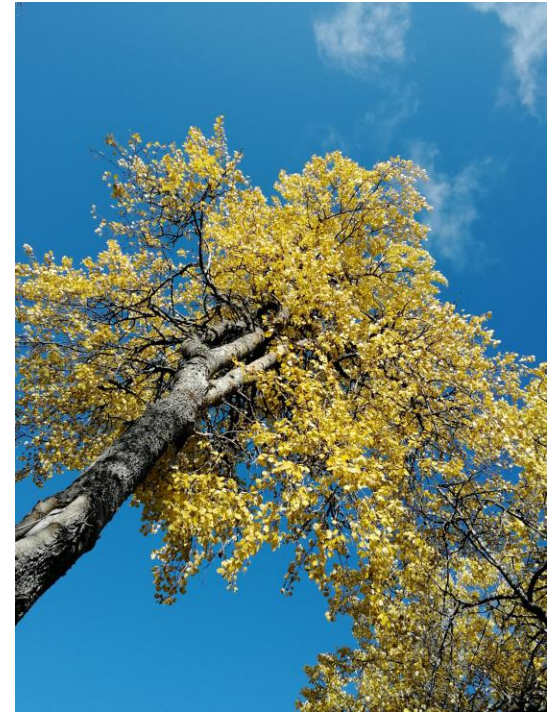
The views of local communities and site users are being sought to inform the development of the project.



Scots pine and birch woodland



Wood anemone



Aspen in Autumn



Context

The **Scottish Government** supports woodland creation as part of future land use in Scotland. This will contribute to:

- **Climate action** (carbon sequestration – 18,000 ha of new woodland per annum by 2024/25)
- Achieving **Biodiversity** targets
- Securing a **Sustainable Supply of Wood Products** to the Scottish forestry industry

Barvick Burn is within Perth and Kinross, and the locality is identified as having either being ‘preferred’ or as having ‘potential’ for woodland creation in the Local Authorities Forestry and Woodland Strategy.

The property formed part of the Glenturret Estate.

The Scheme will be progressed through the **Forestry Grant Scheme** and submitted to Scottish Forestry for their approval.



Objectives

Delivery of Woodland-related benefits

- Mitigation of climate change through carbon sequestration
- Maximising ecological benefits through native woodland expansion
- Enhancing recreational usage
- Improving landscape integration
- Protecting cultural heritage features

Delivery of Wider Benefits

- Educational and research opportunities for the University, local schools, colleges, researchers, and community groups
- Opportunities for other habitat revival and renewal, such as flowering plants that benefit pollinators, peatland restoration and creation of scrapes for waders.
- Building links to neighbouring habitats to provide resilience for species such as red squirrels and black grouse
- Employment creation in the forestry and environmental sectors



Design and application process

The design process has included specialist survey and assessment of:

- **Soils, peat, and hydrology**
 - All identified areas of deep peat have been excluded from the planting area, and cultivation and drainage inputs will be minimized
 - An assessment of the proposals on the site's hydrology will be undertaken
- **Habitats, birds and animals**
 - An independent specialist Habitats, Birds and Protected Species Survey has been carried out as part of this application.
 - Any priority habitats will be protected and retained in open ground.
 - New habitats will be created, notably through establishment of new native and riparian woodlands and through positive management of open ground habitats.



Design and application process

The design process has included specialist survey and assessment of:

- **Archaeology**

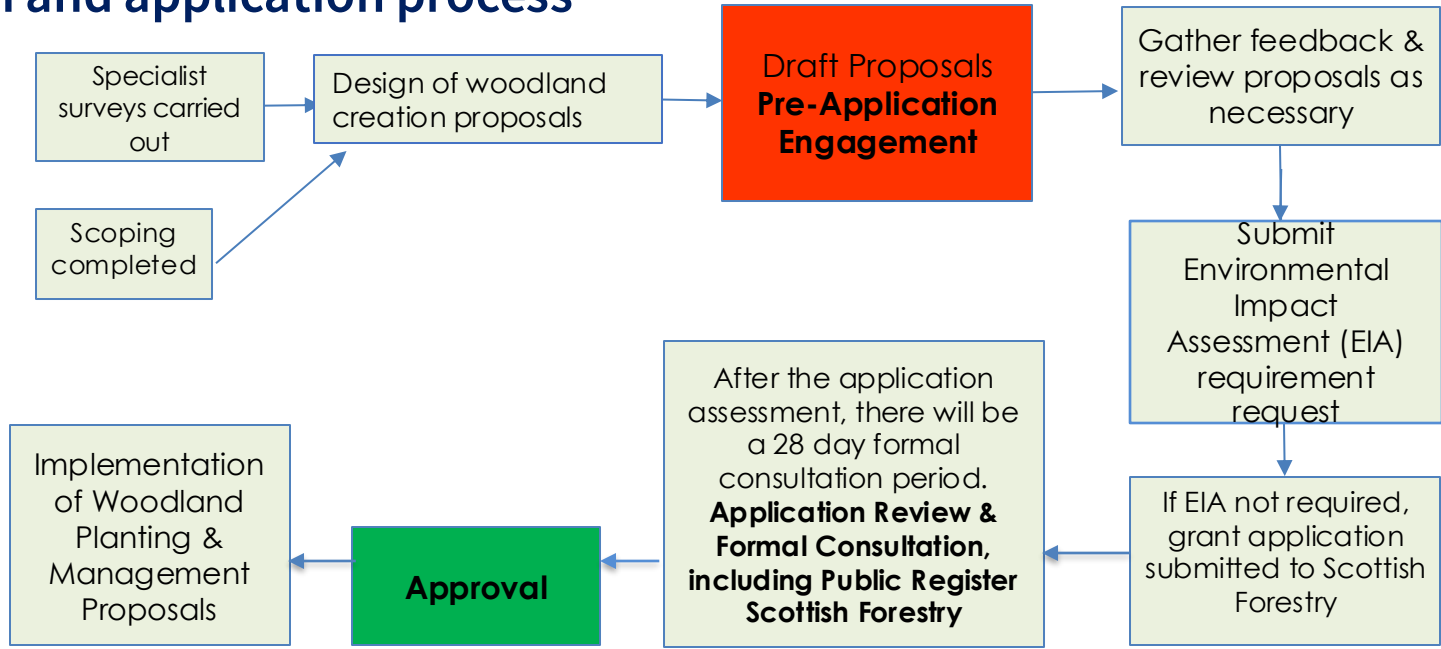
- All identified features of interest will be protected as recommended by the independent specialist report

- **Landscape**

- The woodland has been designed to fit with the local topography and to include a range of native and traditional woodland types and open ground.
- Some of the more elevated areas of the woodland, have been proposed as a mixture of low-density native broadleaves, Scots pine, and juniper and open ground to help fit the woodland in the landscape.
- Visual perspectives have been produced to provide an indication of the likely impact on key views.

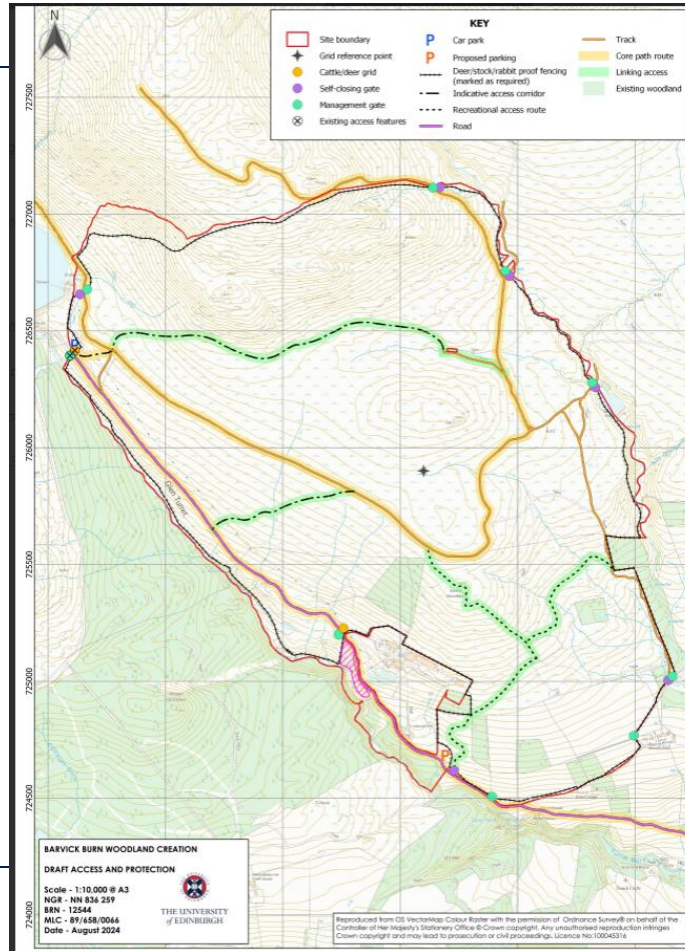
Copies of these specialist surveys and visualisations are available to view at this consultation event and our website.

Design and application process





Recreation and access



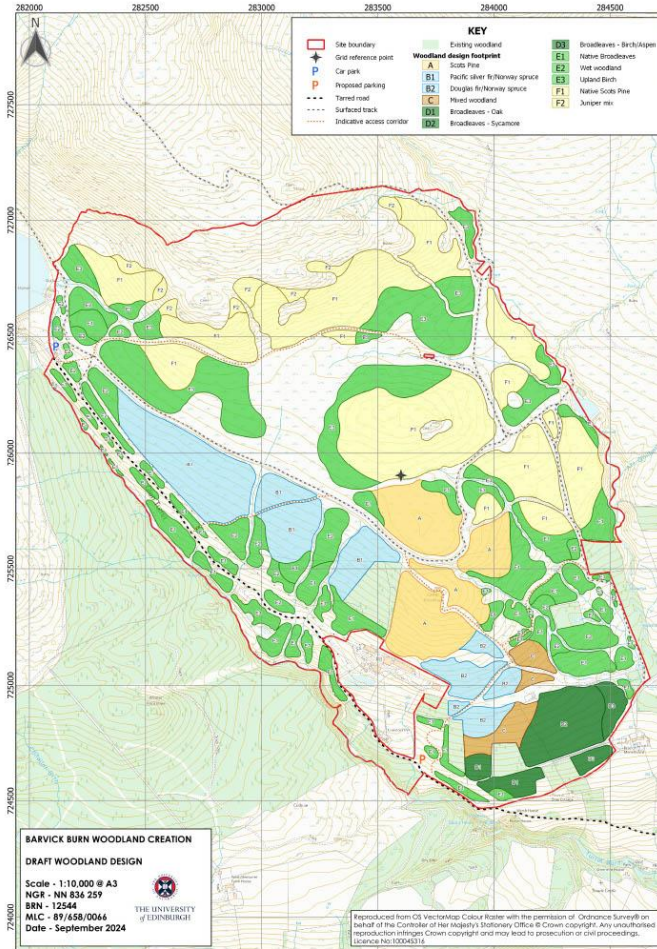


Opportunities & Constraints





Woodland Design



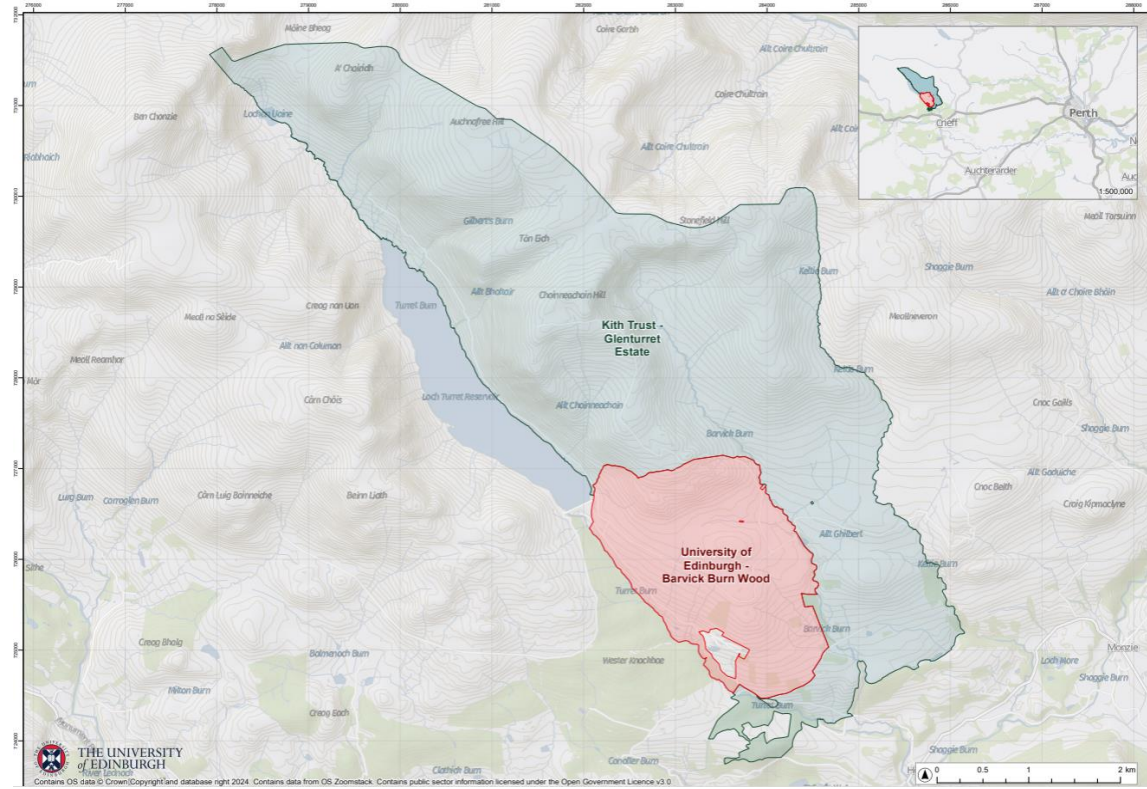


Proposal summary

Total site area	431 ha	100%
Planted	256 ha	59%
Open	163 ha	38%
Existing woodland	12 ha	3%
Total planting area	256 ha	100%
Native broadleaves	93 ha	36%
Native Scots pine	78 ha	30%
Montane scrub	5 ha	2%
Scots Pine mix	25 ha	10%
Diverse conifer mix	40 ha	16%
Productive broadleaves	15 ha	6%



Land use – Integration – The Kith Trust





Other information

Timing

- If approval is granted by Scottish Forestry, woodland establishment works would be likely to be undertaken in winter 2025/26.

Cooperative Approach

- The proposals have been developed in cooperation with the new owners of the remainder of Glenturret Estate.

Agriculture and Employment

- There will be no loss of employment in the agricultural sector, with farming continuing on the bulk of Glenturret Estate.
- Sporting use will cease on Barvick Burn

Woodlands

- Woodland cover within a 10km radius will increase by 1% overall, with a more significant rise in native woodland types
-



Proposal summary

- 256 ha of woodland, covering 59% of the site, will be created
- Most broadleaved woodland will be of native species
- Almost a third of the planting will be of native Scots pine
- Most of the coniferous element will be Scots pine, however other species such as Norway spruce and Douglas fir will be used as a diverse conifer element in the more fertile lower slopes
- All existing access routes will be retained, with open corridors facilitating access throughout
- Most of the planting will be protected by deer fences, avoiding use of plastic tree shelters



How to comment

Your questions, comments and feedback on the proposals are welcome.

You can fill-in a feedback form using the paper copies provided at the consultation event, or by completing the online survey on our website. Please visit edin.ac/barvick

Should you wish further information, please contact:

Forest and Peatlands Team in the Department of Social Responsibility and Sustainability

University of Edinburgh

Email: SRS.Department@ed.ac.uk

A note of all comments received will be passed on to Scottish Forestry, along with details of any design amendments proposed.

If you wish to copy Scottish Forestry into your correspondence, their contact details are:

Scottish Forestry, Perth and Argyll Conservancy, Upper Battleby, Redgorton,

Perth PH1 3EN (panda.cons@forestry.gov.scot)

Details and maps can be found on our website at edin.ac/barvick
